

## South Bucks Heaths and Parklands Biodiversity Opportunity Area Statement

<b>Area Coverage</b>	5662 ha	
<b>Number of Designated Sites</b>	Local wildlife sites 15 SSSI 4	
<b>BAP Habitat</b>	Lowland Mixed Deciduous Woodland 251ha Lowland Dry Acid Grassland 1 ha Lowland Calcareous Grassland 2 ha Lowland Beech & Yew Woodland 162 ha	Lowland Meadow 5.5 ha Wet Woodland 19 ha Lowland Heath 65 ha Lowland Fens 3.5 ha

*This area covers a large proportion of South Bucks District and contains a central core of commons, heathland and wood pasture (including Burnham Beeches, Stoke Common and Black Park*

*This BOA connects with Colne Valley and Thames Valley*

**Joint Character Area** Thames Valley

### Area

**Landscape Types** Agricultural wooded

**Geology** Mostly mudstone overlain by sands and gravels. Small areas around Dorney Wood and Cliveden and in the Alderbourne Valley are chalk.

**Topography** A generally flat plateau cut in the centre by the Alderbourne Valley. The areas to the south of Stoke Poges and to the east of Black Park are lower (by around 40m) and flatter and form part of the ancient river terraces of the Thames and Colne.

**Biodiversity** This area contains a complex mosaic of many BAP priority habitats.

Heathland – The key heathland sites are Stoke Common, Black Park and Burnham Beeches. However a much wider area was once heathland and relict habitat can still be found in some areas.

Acid Grassland – The key acid grassland sites are as per heathland.

Calcareous Grassland – There is one calcareous grassland site at Cliveden

Fen – There are wet flushes in the west of the area, at Burnham Beeches and at Black Park

Hedgerows – There are several areas with concentrations of pre-18<sup>th</sup> century enclosures where there are species rich hedges. As some areas were once part of large parklands there are also likely to be veteran trees located in some hedgerows

Lowland Meadows –. There are also two sites around Stoke Poges and Wexham.

Ponds – There are BAP quality ponds in Littleworth Common and Burnham Beeches and potential ponds across the area. The temporary ponds on heathlands are important for Starfruit

Traditional Orchards – There are potential BAP orchards around Langley

Woodland – The whole area is heavily wooded – with a concentration

of BAP woods centring on Burnham Beeches and Littleworth Common

Wood Pasture & Parkland – Burnham Beeches SAC contains wood pasture with large number of ancient pollards. There are many parkland sites including Black Park, Langley Park, Dorney, Clivenden, Dropmore,

**Access**

Burnham Beeches and Stoke Common are City of London. Langley and Black Parks are BCC. Cliveden is National Trust. Ingrams Copse is Woodland Trust. Littleworth Common is open access.

**Archaeology**

There are several registered parks and gardens – Clivedon, Dorney, Dropmore, Hedsor House, Langley Park, Hall Barn, Stoke Park and Stoke Park Garden of Remembrance. There are additionally 4 SAMs.

**Targets**

Lowland Heathland – Management, Restoration, Creation

Lowland Dry Acid Grassland - Management, Restoration, Creation

Lowland Calcareous Grassland – Management

Lowland Fen - Management, Restoration, Creation

Hedgerows - Management, Restoration

Lowland Meadows - Management, Restoration, Creation

Ponds - Management, Restoration, Creation

Traditional Orchards - Management, Restoration

Wood Pasture & Parkland - Management, Restoration, Creation

Woodland - Management, Restoration

Area of BAP habitat present in BOA (from BCC Integrated Habitat System Mapping 2010) and 2015 Habitat Targets for this BOA									
South Bucks Heaths & Parklands BOA	Lowland Calcareous Grassland	Lowland Meadows	Lowland Dry Acid Grassland	Lowland Heathland	Lowland Fens	Lowland Beech & Yew Woodland	Lowland Mixed Deciduous Woodland	Wet Woodland	Lowland Wood Pasture & Parkland
Area of Habitat in BOA (ha)	1.8	5.3	1	62.5	3.6	161.8	251	18.8	1 site
% of BOA Area	0.03	0.09	0.02	1.1	0.06	2.9	4.4	0.3	-
% of County Resource	0.5	1.4	2.9	81.7	5.4	13.5	15.5	9.3	3
2015 BAP Targets	Lowland Calcareous Grassland	Lowland Meadows	Lowland Dry Acid Grassland	Lowland Heathland	Lowland Fens	Native Woodland			Lowland Wood Pasture & Parkland
Maintenance (ha)	1.8	5.3	1	62.5	3.6	431.6			1 site
Achieving Condition (ha)	1.5	4.4	1	62.5	3.6	408.8			-
Restoration (ha)	0	0.3	0	6.6	0.7	133.6			tbc
Creation (ha)	0	0.2	0	N/A	N/A	42.7			tbc

Info on resource for other BAP habitats

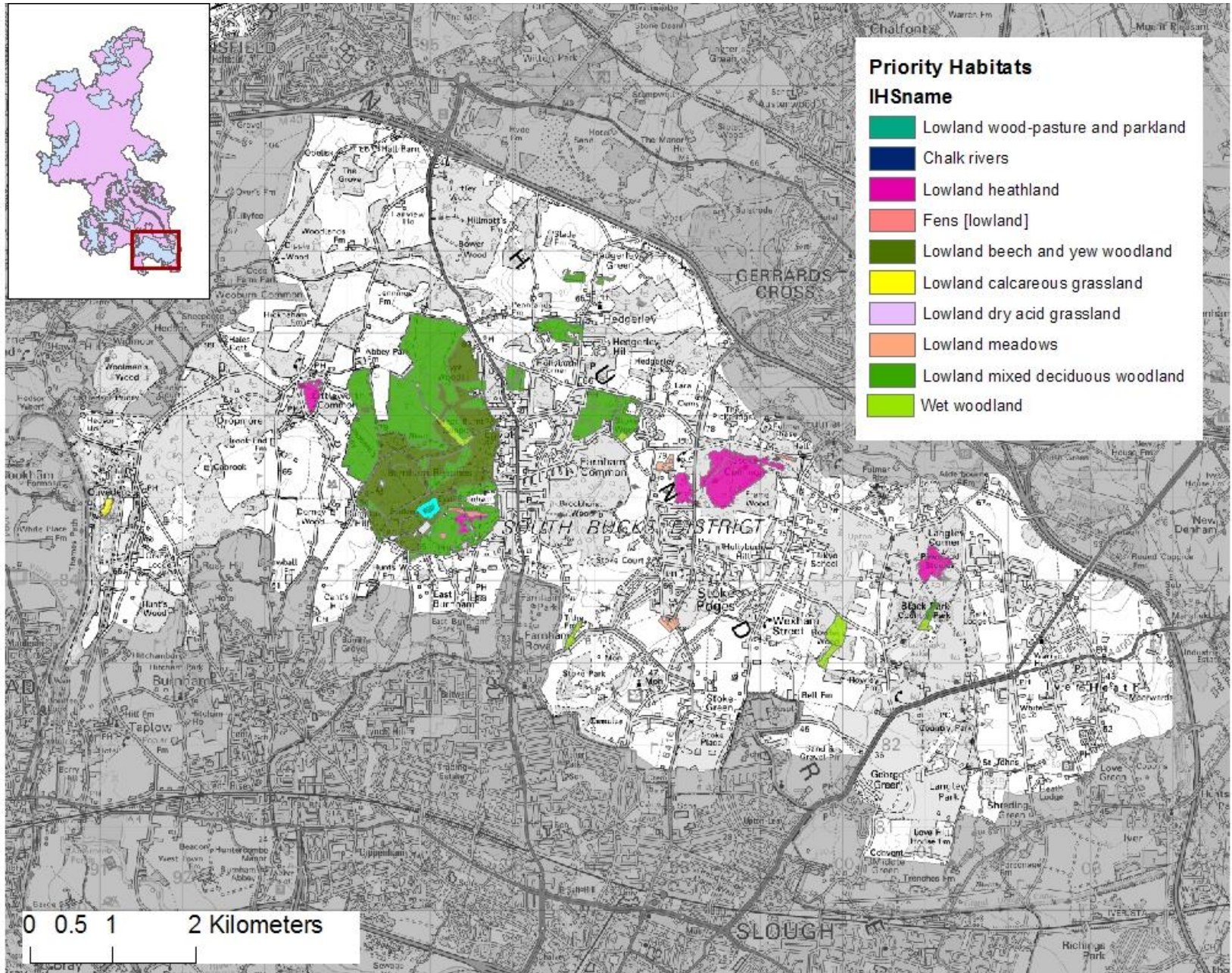
Arable Field Margins		Traditional Orchards		Ponds		Hedgerows		Rivers and Streams	
Area of Arable (ha)	482	No of Orchards	50	No of BAP Priority Ponds	6	% of BOA with potential for hedgerows of high- med biodiversity value	15	BAP Habitat Present	Chalk Rivers
% of BOA in arable	9	Area of Orchards (ha)	18	Creation Target	tbc	% of BOA with potential for hedgerows of med- low biodiversity value	18		
Area of arable in ES (ELS / HLS)	242 (0)	<i>Data from PTES Traditional Orchards Aerial Photo Survey</i>				<i>Data from BCC Historic Landscape Assessment</i>			
% of arable in ES	50								

The Biodiversity Opportunity Areas (BOAs) map depicts the regional priority areas of opportunity for restoration and creation of Biodiversity Action Plan (BAP) habitats. This is a spatial representation of the BAP targets and the BOAs are areas of opportunity, not constraint. The BOAs shown in the map do not include all the BAP habitat in the region, nor do they include all the areas where BAP habitat could exist. In particular, more work is needed to develop approaches in urban and in marine environments.

The Biodiversity Opportunity Areas Map is the property of the members of the South East England Biodiversity Forum. For more information please see [www.sebiodiversity.org.uk](http://www.sebiodiversity.org.uk)

**Priority Habitat Mapping data supplied by Buckinghamshire County Council, Natural Environment Team.**  
**Data is correct of April 2010.**

This map is reproduced from Ordnance Survey material with the permission of Ordnance Survey on behalf of the controller of Her Majesty's Stationary Office© Crown Copyright. Unauthorised reproduction infringes Crown Copyright and may lead to prosecution or civil proceedings.  
 © Copyright Buckinghamshire County Council Licence No. 100021529 2010



South Bucks Heaths and Parklands BOA Statement December 2010