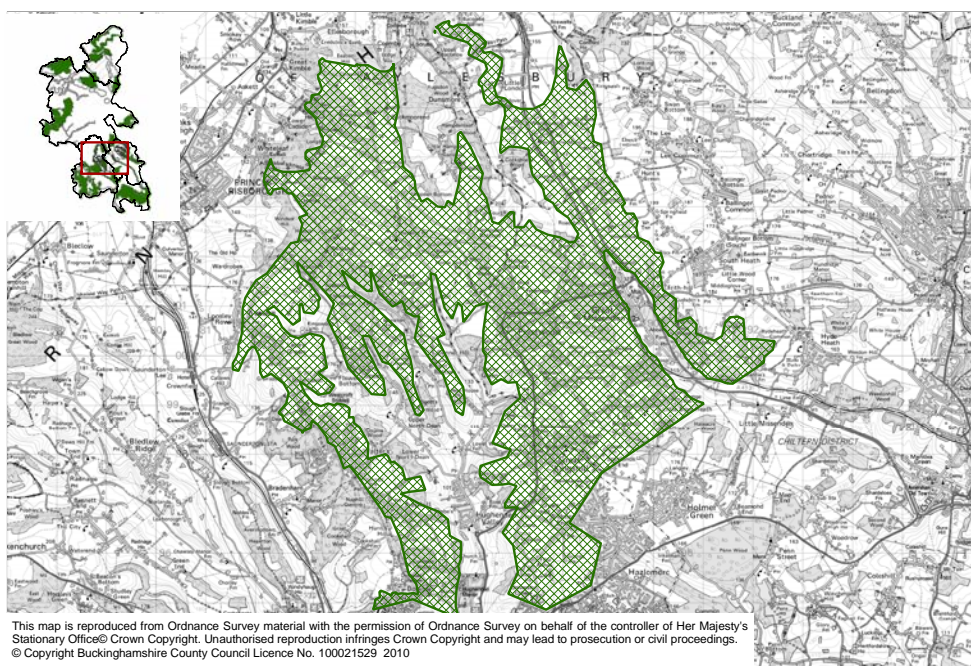


Prestwood Local Biodiversity Opportunity Area Statement



Area Coverage	5015 ha
Number of Designated Sites	Local wildlife sites 21 SSSI 6
BAP Habitat	Wood Pasture and Parkland 14.5ha Lowland Beech and Yew Woodland 62.5ha Lowland Mixed Deciduous Woodland 159ha

This area covers the Chilterns dipslope behind the Escarpment and covers a large number of designated woodlands, and small pockets of calcareous grassland in an agricultural area.

This local BOA connects with 6 BOAs – Dunsmore Woodlands, Chiltern Escarpment, Upper Hughenden Valley, Radnage Valley, Central Chilterns Chalk Rivers and Wendover Woodlands .

Joint Character Area Chilterns

Landscape Types Wooded Agricultural land

Geology Chalk overlain by clay with flints on the higher ground, and by silt, sand and gravel in the valleys

Topography The Chiltern dipslope sloping gently away from the top of the Chilterns Ridge, and incised by two very steeply sloping valleys – the Hughenden Valley and the Misbourne Valley

Biodiversity Woodland – The BOA contains extensive areas of Lowland Mixed Deciduous Woodland and Lowland Beech and Yew Woodland around the

Hampdens

Hedgerows – The north and east of the area have concentrations of pre-18th century enclosures and so may contain species rich hedgerows. There are also 3 green lanes / hedgerow LWSs around Little Hampden and a fourth near Little Kingshill. Grimms Ditch may contain sections of ancient hedgerow.

Wood Pasture and Parkland – There is potential parkland habitat in Hughenden Manor, Missenden Abbey and Chequers.

Arable Field Margins – There are many arable fields in the area and the Chilterns is a Plantlife priority area for rare arable plants

Traditional Orchards – there are several potential Traditional Orchards spread across the area

Access

Archaeology There is one historic parks and gardens –Missenden Abbey and there are numerous scheduled ancient monuments – including Grimms Ditch.

Targets

Woodland – Management, Restoration

Hedgerows - Management, Restoration, Creation

Wood Pasture and Parkland - Management, Restoration

Arable Field Margins – Management, Creation

Traditional Orchards - Management, Restoration

Ponds – Management, Restoration, Creation



The Biodiversity Opportunity Areas (BOAs) map depicts the regional priority areas of opportunity for restoration and creation of Biodiversity Action Plan (BAP) habitats. This is a spatial representation of the BAP targets and the BOAs are areas of opportunity, not constraint. The BOAs shown in the map do not include all the BAP habitat in the region, nor do they include all the areas where BAP habitat could exist. In particular, more work is needed to develop approaches in urban and in marine environments.

The Biodiversity Opportunity Areas Map is the property of the members of the South East England Biodiversity Forum. For more information please see www.sebiodiversity.org.uk