

Central Chilterns Chalk Rivers Biodiversity Opportunity Area Statement



Area Coverage	2150 ha
Number of Designated Sites	Local wildlife sites 9 SSSI 1
BAP Habitat	Chalk Rivers Lowland Beech and Yew Woodland 39 ha Lowland Mixed Deciduous Woodland 8 ha Lowland Meadows 0.5 ha Purple Moor Grass & Rush Pastures 3 ha Wood Pasture and Parkland 84.5ha

This area comprises of the valleys of 2 chalk streams – the Wye and the Misbourne.

The Wye Valley connects the Upper Hughenden Valley, Radnage Valley and Gomm Valley BOAs while the Misbourne connects to the Colne Valley

Joint Character Area Chilterns, Thames Valley

Landscape Types The Misbourne flows through a wooded agricultural landscape until it's lower reaches where it has an unwooded wetland landscape, The Wye Valley is predominantly urban until south of Loudwater where it is wooded agricultural.

Geology Chalk except for the final reaches of the Misbourne which is mudstone. There is alluvium on the valley bottoms and wider sands and gravels on the lower reaches of both.

Topography Valleys with steep slopes with protruding spurs and a strong convex profile to the upper slopes. The valley bottoms are gently sloping with little flood plain.

Biodiversity Rivers / Streams – Both the Misbourne and Wye are chalk streams and are a priority in the UK Rivers and Streams HAP.

Lowland Meadows – There are lowland meadows at Old Rectory Meadows SSSI in the Misbourne Valley.

Lakes – Shardeloes Lake in Misbourne Valley

Woodland – There are 2 woodland LWSs in the Wye Valley.

Traditional Orchards – There are potential BAP orchards in both valleys.

Wood Pasture & Parkland – There are potential parklands in both valleys – Misbourne Valley – Missenden Abbey, Shardeloes, Denham Place and Wye Valley – West Wycombe Hughenden Manor, Wycombe Abbey.

Hedgerows – Some areas of the Misbourne Valley contain pre-18th century enclosures which may contain species rich hedgerows.

Access The Wye flows through West Wycombe Park (National Trust), The Rye & Kings Mead (both Wycombe DC) and other public open spaces. Warren LNR is owned by Wycombe DC. The Hughenden Stream flows through Hughenden Park (National Trust / Wycombe DC). There are public

footpaths along stretches of the Misbourne and Wye.

Archaeology

There are historic parks and gardens in both valleys – Misbourne Valley – Missenden Abbey, Shardeloes, Denham Place and Wye Valley – West Wycombe, Hughenden Manor, Wycombe Abbey.

Targets

Chalk Rivers – Management, Restoration

Lowland Meadows – Management, Restoration, Creation

Eutrophic Standing Water– Management, Restoration

Woodland – Management, Restoration

Traditional Orchards - Management, Restoration

Wood Pasture & Parkland - Management, Restoration

Hedgerows - Management, Restoration, Creation

Area of BAP habitat present in BOA (from BCC Integrated Habitat System Mapping 2010) and 2015 Habitat Targets for this BOA					
Central Chilterns Chalk Rivers BOA	Lowland Calcareous Grassland	Lowland Meadows	Purple Moor Grass & Rush Pasture	Lowland Beech & Yew Woodland	Lowland Wood Pasture & Parkland
Area of Habitat in BOA (ha)	0.1	0.4	3	13.7	2 sites
% of BOA Area	0.005	0.02	0.14	0.6	-
% of County Resource	0.03	0.1	16.6	1.1	6
2015 BAP Targets	Lowland Calcareous Grassland	Lowland Meadows	Purple Moor Grass & Rush Pasture	Native Woodlands	Lowland Wood Pasture & Parkland
Maintenance (ha)	0.1	0.4	3	13.7	2 sites
Achieving Condition (ha)	0.1	0.3	2.7	8.9	tbc
Restoration (ha)	0	0	0	0	tbc
Creation (ha)	0	0	N/A	0	tbc

Info on resource for other BAP habitats

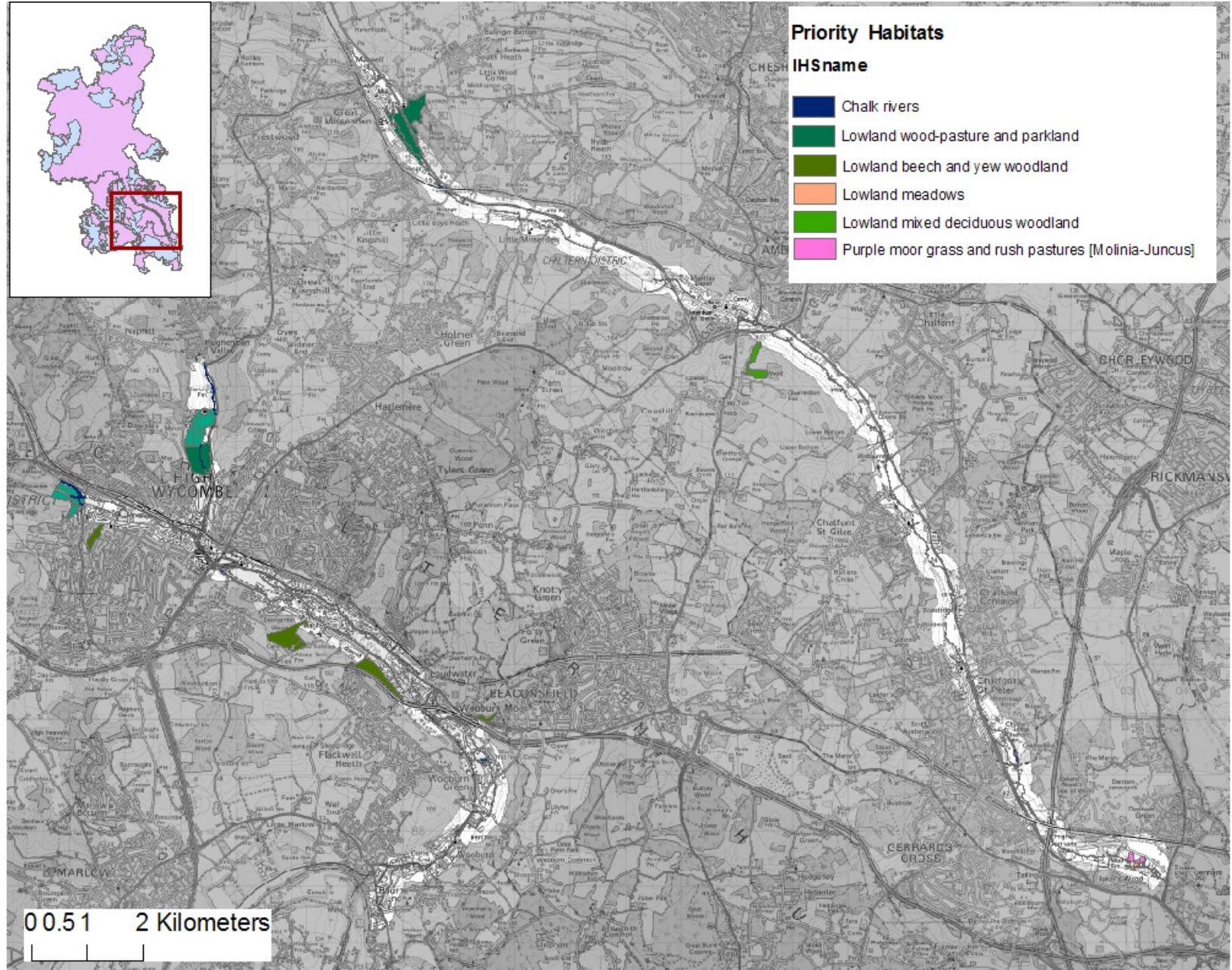
Arable Field Margins		Traditional Orchards		Ponds		Hedgerows		Rivers and Streams	
Area of Arable (ha)	193	No of Orchards	18	No of BAP Priority Ponds	0	% of BOA with potential for hedgerows of high- med biodiversity value	24	BAP Habitat Present	Chalk Rivers
% of BOA in arable	9	Area of Orchards (ha)	13.9	Creation Target	tbc	% of BOA with potential for hedgerows of med- low biodiversity value	15		
Area of arable in ES (ELS / HLS)	94 (0)	<i>Data from PTES Traditional Orchards Aerial Photo Survey</i>				<i>Data from BCC Historic Landscape Assessment</i>			
% of arable in ES	49								

The Biodiversity Opportunity Areas (BOAs) map depicts the regional priority areas of opportunity for restoration and creation of Biodiversity Action Plan (BAP) habitats. This is a spatial representation of the BAP targets and the BOAs are areas of opportunity, not constraint. The BOAs shown in the map do not include all the BAP habitat in the region, nor do they include all the areas where BAP habitat could exist. In particular, more work is needed to develop approaches in urban and in marine environments.

The Biodiversity Opportunity Areas Map is the property of the members of the South East England Biodiversity Forum. For more information please see www.sebiodiversity.org.uk

Priority Habitat Mapping data supplied by Buckinghamshire County Council, Natural Environment Team.
Data is correct of April 2010.

This map is reproduced from Ordnance Survey material with the permission of Ordnance Survey on behalf of the controller of Her Majesty's Stationary Office© Crown Copyright. Unauthorised reproduction infringes Crown Copyright and may lead to prosecution or civil proceedings.
 © Copyright Buckinghamshire County Council Licence No. 100021529 2010



Central Chilterns Chalk Rivers BOA Statement December 2010