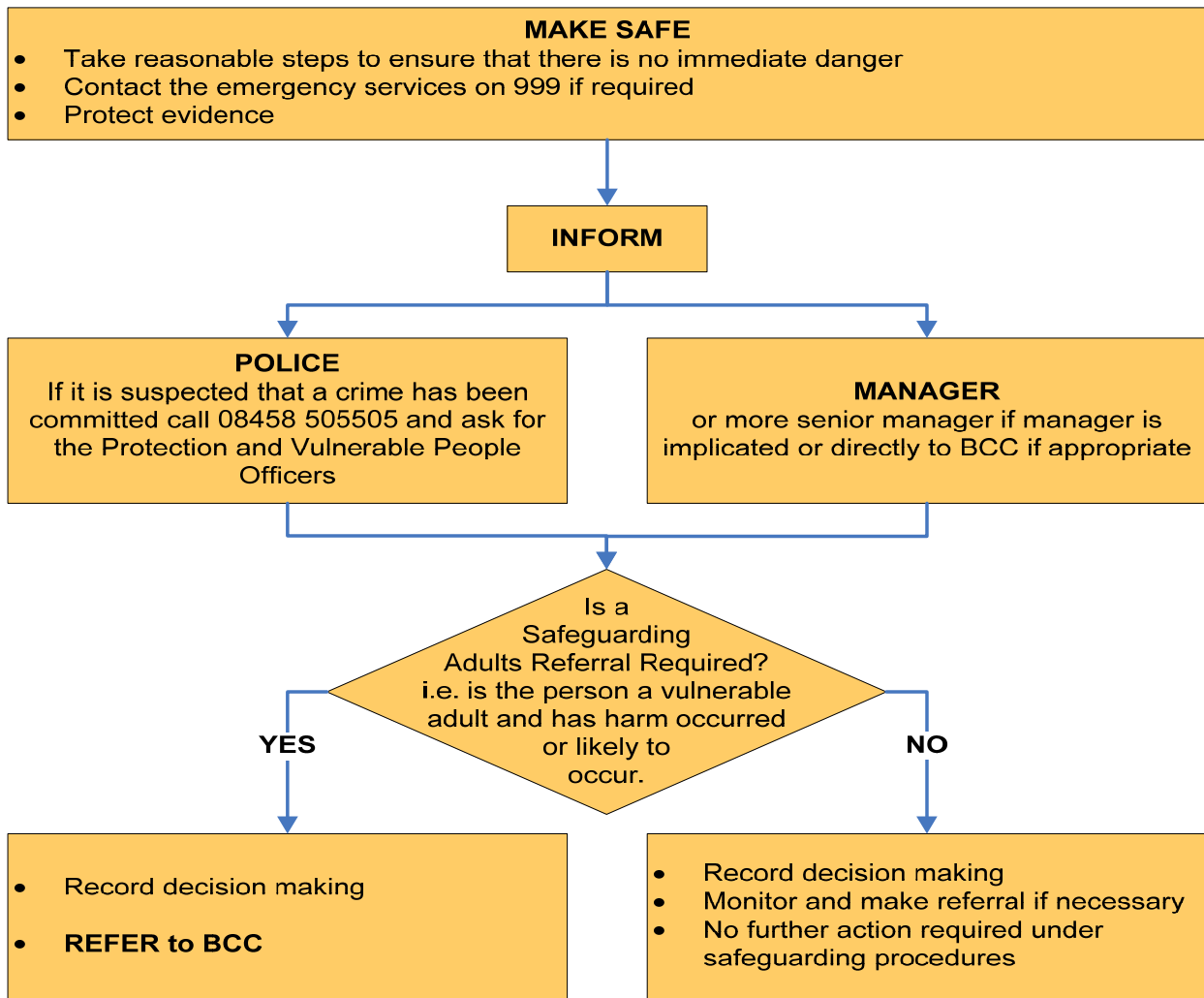


What to do if you have safeguarding concerns about a vulnerable person



Who to contact at Bucks County Council for advice or to make a referral

If concerns relate to;	Refer to
Circumstances of vulnerable adult are unknown	Central Access Team: 01296 383204 Careline:..... 0800 137915 E-mail: safeguardingadults@buckscc.gov.uk
Vulnerable adult has an allocated social worker and their name and details are known	Contact allocated worker or team manager. If they are not available contact as above.
Referral is outside normal hours	Emergency Duty Team: ... 01494 675802
Concern is about a child	Careline:..... 0800 137915 Out of Hours Emergency Duty Team: ... 01494 675802
Your organisation's Safeguarding contact:	