

Key issues: LAA / NIS

Exception Reporting on LAA – Key Issues
Across all Blocks

Strategic view across the block. Challenge and support role. Focus on LAA Exception report rest of NIS.

Bucks Strategic Partnership Board

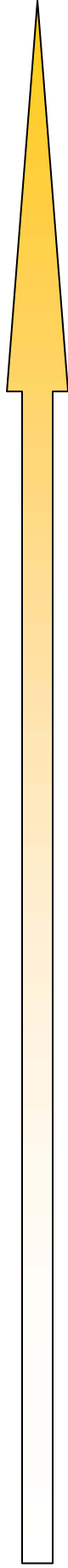
Bucks Strategic Partnership LAA Implementation Group

Children and Young People's Trust Board (Sue Imbriano & Chris Munday)

Operational focus across all National Indicators

- BE HEALTHY**
 NI 50 Emotional health of children
NI 51 Effectiveness of child and adolescent mental health (CAMHs) services
 NI 52 Take up of school lunches
 NI 53 Prevalence of breastfeeding at 6 – 8 weeks from birth
 NI 54 Services for disabled children
 NI 55 Obesity among primary school age children in Reception Year
NI 56 Obesity among primary school age children in Year 6
 NI 57 Children and young people's participation in high-quality PE and sport
 NI 58 Emotional and behavioural health of children in care
- MAKE A POSITIVE CONTRIBUTION**
 NI 110 Young people's participation in positive activities
 NI 112 Under 18 conception rate
 NI 113 Prevalence of Chlamydia in under 20 year olds
 NI 114 Rate of permanent exclusions from school
- STAY SAFE**
 NI 59 Initial assessments for children's social care within 7 working days of referral
 NI 60 Core assessments children's social care within 35 work. days of commencement
 NI 61 Stability of looked after children adopted following an agency decision that the child should be placed for adoption
 NI 62 Stability of placements of looked after children: number of moves
 NI 63 Stability of placements of looked after children: length of placement
 NI 64 Child protection plans lasting 2 years or more
 NI 65 Children becoming the subject of a Child Protection Plan for a second or subsequent time
 NI 66 Looked after children cases which were reviewed within required timescales
 NI 67 Child protection cases which were reviewed within required timescales
 NI 68 Referrals to children's social care going on to initial assessment
NI 69 Children who have experienced bullying
 NI 70 Hospital admissions caused by unintentional and deliberate injuries to children and young people
 NI 71 Children who have run away from home/care overnight
- ECONOMIC WELLBEING**
 NI 116 Proportion of children in poverty
 NI 117 16 to 18 year olds who are not in education, training or employment (NEET)
 NI 118 Take up of formal childcare by low-income working families

- ENJOY AND ACHIEVE**
 NI 72 Achievement of at least 78 points across the Early Years Foundation Stage with at least 6 in each of the scales in PSED and CLL
 NI 73 Achievement at level 4 or above in both English and Maths at Key Stage 2 (Threshold)
 NI 75 Achievement of 5 A*-C grades at GCSE or equiv. including Eng. and Maths (Threshold)
 NI 76 Achievement at level 4 or above in both English and Maths at KS2 (Floor)
 NI 78 Achievement of 5 A*-C grades at GCSE and equiv. including Eng + Maths (Floor)
 NI 79 Achievement of a Level 2 qualification by the age of 19
 NI 80 Achievement of a Level 3 qualification by the age of 19
 NI 81 Inequality gap in the achievement of a Level 3 qualification by the age of 19
 NI 82 Inequality gap in the achievement of a Level 2 qualification by the age of 19
 NI 84 Achievement of 2 or more A*-C grades in Science GCSEs or equivalent
 NI 85 Post-16 participation in physical sciences (A Level Physics, Chemistry and Maths)
 NI 86 Secondary schools judged as having good or outstanding standards of behaviour
 NI 87 Secondary school persistent absence rate
 NI 88 Number of Extended Schools
 NI 89 Number of schools in special measures
 NI 90 Take up of 14-19 learning diplomas
 NI 91 Participation of 17 year-olds in education or training
 NI 92 Narrowing gap between the lowest achieving 20% in the EYFSP and the rest
 NI 93 Progression by 2 levels in English between Key Stage 1 and Key Stage 2
 NI 94 Progression by 2 levels in Maths between Key Stage 1 and Key Stage 2
 NI 99 Children in care reaching level 4 in English at Key Stage 2
 NI 100 Children in care reaching level 4 in Maths at Key Stage 2
 NI 101 Children in care achieving 5 A*-C GCSEs (or equivalent) at Key Stage 4
NI 102 Achievement gap between pupils eligible for free school meals and their peers achieving the expected level at Key Stages 2 and 4
 NI 103 Special Educational Needs – statements issued within 26 weeks
 NI 104 SEN/non-SEN gap – achieving Key Stage 2 English and Maths threshold
 NI 105 SEN/non-SEN gap – achieving 5 A*-C GCSE inc. English and Maths
 NI 106 Young people from low income backgrounds progressing to higher education
 NI 107 Key Stage 2 attainment for Black and minority ethnic groups
 NI 108 Key Stage 4 attainment for Black and minority ethnic groups
 NI 109 Number of Sure Start Children Centres
 NI 199 Children and young people's satisfaction with parks and play areas - (TBC)
- These indicators are also in the Safer and Stronger Partnership Board**
 NI 19 Rate of proven re-offending by young offenders
 NI 43 Young people within the Youth Justice System receiving a conviction in court who are sentenced to custody
 NI 44 Ethnic composition of offenders on Youth Justice System disposals
 NI 45 Young offender's engagement in suitable education, employment or training
 NI 46 Young offender's access to suitable accommodation
NI 111 First time entrants to the Youth Justice System aged 10-17



Bold Indicator Names denote inclusion in LAA
Red Indicator Names denote 16 Statutory DCSF Targets

Green Indicator names denote inclusion in CYPP but not LAA

Key issues: LAA / NIS

Exception Reporting on LAA
– Key Issues Across all Blocks

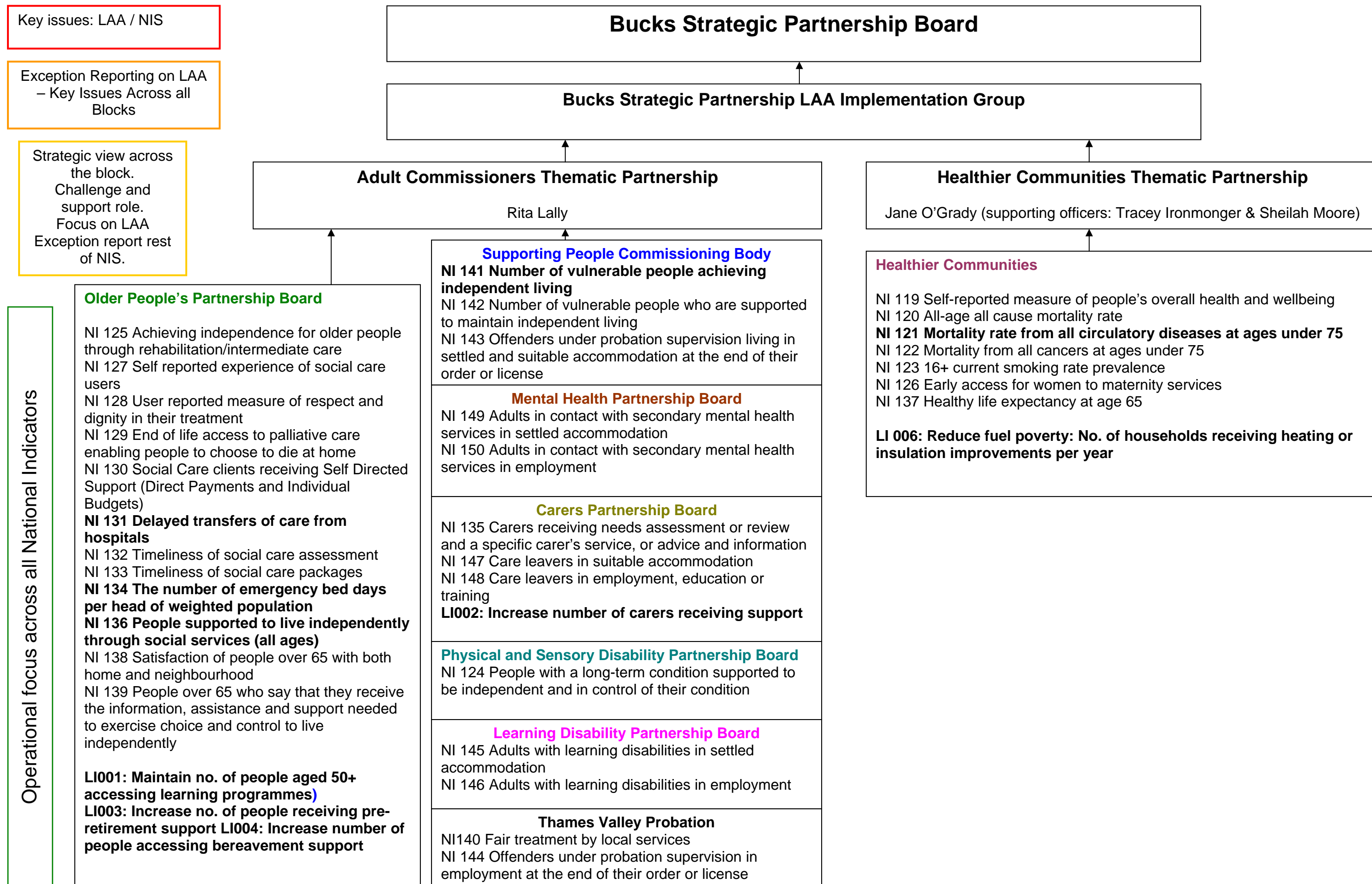
Strategic view across the block.
Challenge and support role.
Focus on LAA
Exception report rest of NIS.

Bucks Strategic Partnership Board

Bucks Strategic Partnership LAA Implementation Group

Bucks Economy and Environment Thematic Partnership
Gill Gowing (CDC) and Graham Grover (BELP)

Operational focus across all National Indicators	<p>Joint Waste Committee NI 191 Residual household waste per head NI 192 Household waste recycled and composted NI 193 Municipal waste land filled NI 195 Improved street and environmental cleanliness (levels of graffiti, litter, detritus and fly posting) NI 196 Improved street and environmental cleanliness – fly tipping</p>	<p>Transportation NI 167 Congestion – average journey time per mile during the morning peak NI 168 Principal roads where maintenance should be considered NI 169 Non-principal roads where maintenance should be considered NI 175 Access to services and facilities by public transport, walking and cycling NI 176 Working age people with access to employment by public transport (and other specified modes) NI 177 Local bus passenger journeys originating in the authority area NI 178 Bus services running on time NI 198 Children travelling to school – mode of travel usually used</p>	<p>Bucks Economic and Lifelong Learning Partnership NI 151 Overall employment rate NI 152 Working age people on out of work benefits NI 153 Working age people claiming out of work benefits in the worst performing neighbourhoods NI 161 Learners achieving a Level 1 qualification in literacy NI 162 Learners achieving an Entry Level 3 qualification in numeracy NI 163 Working age population qualified to at least level 2 or higher NI 164 Working age population qualified to level 3 or higher NI 165 Working age population qualified to level 4 or higher NI 166 Average earnings of employees in the area NI 171 New business registration rate NI 172 VAT registered businesses in the area showing growth NI 173 People falling out of work and on to incapacity benefits NI 174 Skills gaps in the current workforce reported by employers</p>	<p>Bucks Housing Officers Group NI 155 Number of affordable homes delivered – gross NI 156 Number of households living in Temporary Accommodation NI 180 Changes in Housing Benefit/ Council Tax Benefit entitlements within the year NI 181 Time taken to process Housing Benefit/Council Tax Benefit new claims and change events NI 187 Tackling fuel poverty – people receiving income based benefits living in homes with a low energy efficiency rating LI007 No. of Clients accessing private rented housing through LA Partnership Schemes</p>	<p>Bucks Planning Officers Group NI 154 Net additional homes provided NI 157 Processing of planning applications as measured against targets for 'major', 'minor' and 'other' application types NI 159 Supply of ready to develop housing sites NI 170 Previously developed land that has been vacant or derelict for more than 5 years</p>	<p>Bucks Environment Group NI 185 CO2 reduction from Local Authority operations NI 186 Per capita CO2 emissions in the LA area NI 188 Adapting to climate change NI 189 Flood and coastal erosion risk management NI 194 Level of air quality – reduction in NOx and primary PM10 emissions through local authority's estate and operations NI</p>
	<p>Overseen directly by Economy and Environment Thematic Partnership NI 158 % Decent council homes NI 160 Local Authority tenants' satisfaction with landlord services NI 179 Value for money – total net value of on-going cash-releasing value for money gains that have impacted since the start of the 2008-9 financial year NI 182 Satisfaction of businesses with local authority regulation services NI 183 Impact of local authority regulatory services on the fair trading environment NI 184 Food establishments in the area which are broadly compliant with hygiene laws NI 190 Achievement in meeting standards for the control system for animal health 197 Improved local biodiversity – active management of local sites</p>					



Key issues: LAA / NIS

Exception Reporting on LAA
– Key Issues Across all Blocks

Strategic view across the block.
Challenge and support role.
Focus on LAA
Exception report rest of NIS.

Operational focus across all National Indicators

Older People's Partnership Board

NI 125 Achieving independence for older people through rehabilitation/intermediate care
 NI 127 Self reported experience of social care users
 NI 128 User reported measure of respect and dignity in their treatment
 NI 129 End of life access to palliative care enabling people to choose to die at home
 NI 130 Social Care clients receiving Self Directed Support (Direct Payments and Individual Budgets)
NI 131 Delayed transfers of care from hospitals
 NI 132 Timeliness of social care assessment
 NI 133 Timeliness of social care packages
NI 134 The number of emergency bed days per head of weighted population
NI 136 People supported to live independently through social services (all ages)
 NI 138 Satisfaction of people over 65 with both home and neighbourhood
 NI 139 People over 65 who say that they receive the information, assistance and support needed to exercise choice and control to live independently

LI001: Maintain no. of people aged 50+ accessing learning programmes)
LI003: Increase no. of people receiving pre-retirement support **LI004: Increase number of people accessing bereavement support**

Supporting People Commissioning Body

NI 141 Number of vulnerable people achieving independent living
 NI 142 Number of vulnerable people who are supported to maintain independent living
 NI 143 Offenders under probation supervision living in settled and suitable accommodation at the end of their order or license

Mental Health Partnership Board

NI 149 Adults in contact with secondary mental health services in settled accommodation
 NI 150 Adults in contact with secondary mental health services in employment

Carers Partnership Board

NI 135 Carers receiving needs assessment or review and a specific carer's service, or advice and information
 NI 147 Care leavers in suitable accommodation
 NI 148 Care leavers in employment, education or training
LI002: Increase number of carers receiving support

Physical and Sensory Disability Partnership Board

NI 124 People with a long-term condition supported to be independent and in control of their condition

Learning Disability Partnership Board

NI 145 Adults with learning disabilities in settled accommodation
 NI 146 Adults with learning disabilities in employment

Thames Valley Probation

NI140 Fair treatment by local services
 NI 144 Offenders under probation supervision in employment at the end of their order or license

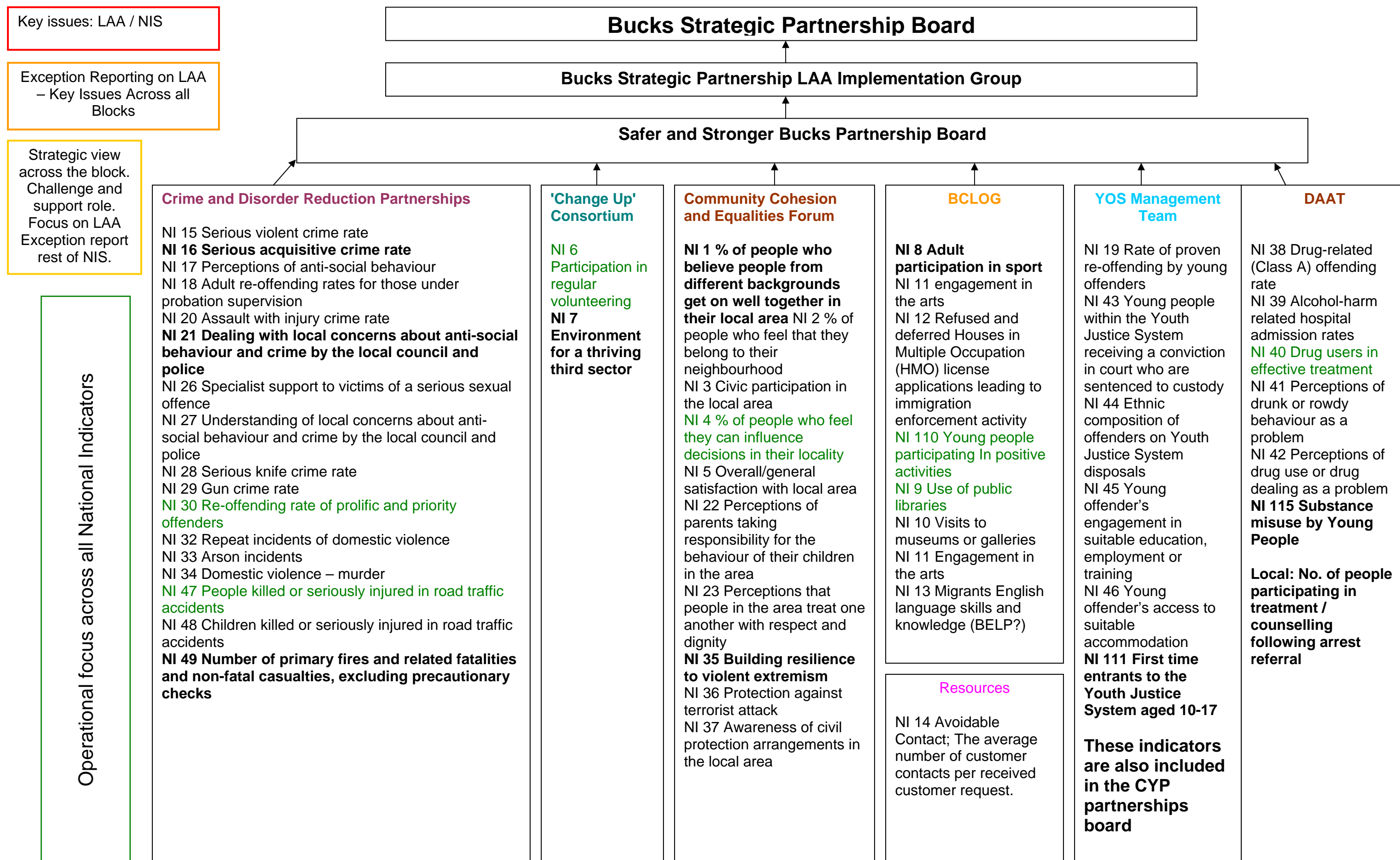
Healthier Communities Thematic Partnership
 Jane O'Grady (supporting officers: Tracey Ironmonger & Sheilah Moore)

Healthier Communities

NI 119 Self-reported measure of people's overall health and wellbeing
 NI 120 All-age all cause mortality rate
NI 121 Mortality rate from all circulatory diseases at ages under 75
 NI 122 Mortality from all cancers at ages under 75
 NI 123 16+ current smoking rate prevalence
 NI 126 Early access for women to maternity services
 NI 137 Healthy life expectancy at age 65

LI 006: Reduce fuel poverty: No. of households receiving heating or insulation improvements per year

Bold indicator name denotes inclusion in LAA



Key issues: LAA / NIS

Exception Reporting on LAA
– Key Issues Across all Blocks

Strategic view across the block. Challenge and support role. Focus on LAA Exception report rest of NIS.

Operational focus across all National Indicators

Bucks Strategic Partnership Board

Bucks Strategic Partnership LAA Implementation Group

Safer and Stronger Bucks Partnership Board

Crime and Disorder Reduction Partnerships

NI 15 Serious violent crime rate
NI 16 Serious acquisitive crime rate
 NI 17 Perceptions of anti-social behaviour
 NI 18 Adult re-offending rates for those under probation supervision
 NI 20 Assault with injury crime rate
NI 21 Dealing with local concerns about anti-social behaviour and crime by the local council and police
 NI 26 Specialist support to victims of a serious sexual offence
 NI 27 Understanding of local concerns about anti-social behaviour and crime by the local council and police
 NI 28 Serious knife crime rate
 NI 29 Gun crime rate
 NI 30 Re-offending rate of prolific and priority offenders
 NI 32 Repeat incidents of domestic violence
 NI 33 Arson incidents
 NI 34 Domestic violence – murder
 NI 47 People killed or seriously injured in road traffic accidents
 NI 48 Children killed or seriously injured in road traffic accidents
NI 49 Number of primary fires and related fatalities and non-fatal casualties, excluding precautionary checks

'Change Up' Consortium

NI 6 Participation in regular volunteering
NI 7 Environment for a thriving third sector

Community Cohesion and Equalities Forum

NI 1 % of people who believe people from different backgrounds get on well together in their local area
 NI 2 % of people who feel that they belong to their neighbourhood
 NI 3 Civic participation in the local area
 NI 4 % of people who feel they can influence decisions in their locality
 NI 5 Overall/general satisfaction with local area
 NI 22 Perceptions of parents taking responsibility for the behaviour of their children in the area
 NI 23 Perceptions that people in the area treat one another with respect and dignity
NI 35 Building resilience to violent extremism
 NI 36 Protection against terrorist attack
 NI 37 Awareness of civil protection arrangements in the local area

BCLOG

NI 8 Adult participation in sport
 NI 11 engagement in the arts
 NI 12 Refused and deferred Houses in Multiple Occupation (HMO) license applications leading to immigration enforcement activity
NI 110 Young people participating in positive activities
NI 9 Use of public libraries
 NI 10 Visits to museums or galleries
 NI 11 Engagement in the arts
 NI 13 Migrants English language skills and knowledge (BELP?)

Resources

NI 14 Avoidable Contact; The average number of customer contacts per received customer request.

YOS Management Team

NI 19 Rate of proven re-offending by young offenders
 NI 43 Young people within the Youth Justice System receiving a conviction in court who are sentenced to custody
 NI 44 Ethnic composition of offenders on Youth Justice System disposals
 NI 45 Young offender's engagement in suitable education, employment or training
 NI 46 Young offender's access to suitable accommodation
NI 111 First time entrants to the Youth Justice System aged 10-17

These indicators are also included in the CYP partnerships board

DAAT

NI 38 Drug-related (Class A) offending rate
 NI 39 Alcohol-harm related hospital admission rates
NI 40 Drug users in effective treatment
 NI 41 Perceptions of drunk or rowdy behaviour as a problem
 NI 42 Perceptions of drug use or drug dealing as a problem
NI 115 Substance misuse by Young People

Local: No. of people participating in treatment / counselling following arrest referral

Bold Indicator Names denote inclusion in LAA
 Green Indicator names denote local priority targets not in the LAA