

## Wendover Woodlands Biodiversity Opportunity Area Statement



Buckinghamshire  
& Milton Keynes  
Biodiversity Partnership

<b>Area Coverage</b>	1385 ha
<b>Number of Designated Sites</b>	Local wildlife sites 17 SSSI 3
<b>BAP Habitat</b>	Lowland Mixed Deciduous Woodland 91 ha Lowland Calcareous Grassland 17.5 ha Lowland Beech & Yew Woodland 173 ha

*Wendover Woods are located on the Chiltern Escarpment and the top of the Chilterns Plateau between Wendover and Tring.*

<b>Joint Character Area</b>	Chilterns
<b>Landscape Types</b>	Low wooded hills
<b>Geology</b>	Chalk. The plateau and dipslope are overlain with chalk with flints
<b>Topography</b>	The escarpment is steeply sloping, rising to a plateau that falls away gently to the south east
<b>Biodiversity</b>	<p>Calcareous Grassland – There are a concentration of calcareous grassland in the 2 SSSIs at Dancersend. Aston Clinton Ragpits SSSI is a valuable site with 9 orchid species, Chiltern and autumn gentians and 27 species of butterfly. There are also small areas of calcareous grassland at RAF Halton RAF.</p> <p>Woodlands – There is beech and yew woodland at Dancersend, Wendover Woods, Pavis and Northill Woods and the Great Widmoor and Barn Woods Complex. There are also BAP mixed deciduous woodlands at Dancersend SSSI and in LWSs including Drayton Wood and Buckland Wood.</p> <p>Arable Field Margins – There are some arable fields on the plateau and the Chilterns is a Plantlife priority area for rare arable plants</p>
<b>Access</b>	Dancersend, and Aston Clinton Ragpits are owned by BBOWT and Wendover Woods is Forestry Commission.
<b>Archaeology</b>	There is 1 scheduled ancient monument – Boddington Hill Fort
<b>Targets</b>	<p>Lowland Calcareous Grassland – Management, Restoration, Creation</p> <p>Woodland - Management, Restoration, Creation</p> <p>Arable Field Margins – Management, Creation</p> <p>Hedgerows - Management, Restoration, Creation</p>

<b>Area of BAP habitat present in BOA (from BCC Integrated Habitat System Mapping 2010) and 2015 Habitat Targets for this BOA</b>			
<b>Wendover Woodlands BOA</b>	<b>Lowland Calcareous Grassland</b>	<b>Lowland Beech &amp; Yew Woodland</b>	<b>Lowland Mixed Deciduous Woodland</b>
Area of Habitat in BOA (ha)	17.7	173.1	91
% of BOA Area	1.3	12.5	6.6
% of County Resource	5.1	14.5	5.6
<b>2015 BAP Targets</b>	<b>Lowland Calcareous Grassland</b>	<b>Native Woodland</b>	
Maintenance (ha)	17.7	264.1	
Achieving Condition (ha)	14.7	222	
Restoration (ha)	2.2	203.1	
Creation (ha)	3.9	26.1	

Info on resource for other BAP habitats

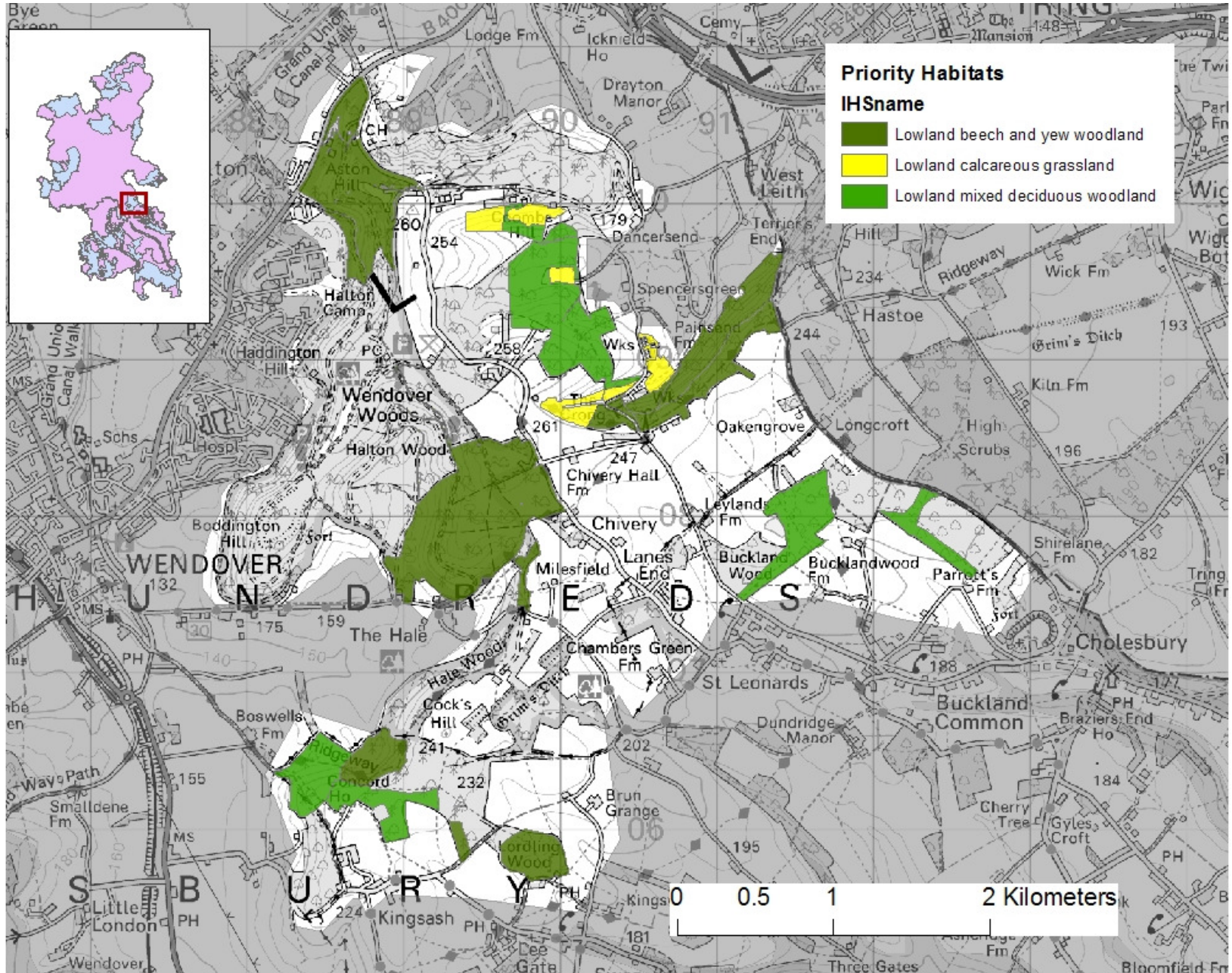
<b>Arable Field Margins</b>		<b>Traditional Orchards</b>		<b>Hedgerows</b>	
Area of Arable (ha)	253	No of Orchards	7	% of BOA with potential for hedgerows of high-med biodiversity value	22
% of BOA in arable	18	Area of Orchards (ha)	1.3	% of BOA with potential for hedgerows of med-low biodiversity value	22
Area of arable in ES (ELS / HLS)	232 (0)	<i>Data from PTES Traditional Orchards Aerial Photo Survey</i>		<i>Data from BCC Historic Landscape Assessment Survey</i>	
% of arable in ES	92				

The Biodiversity Opportunity Areas (BOAs) map depicts the regional priority areas of opportunity for restoration and creation of Biodiversity Action Plan (BAP) habitats. This is a spatial representation of the BAP targets and the BOAs are areas of opportunity, not constraint. The BOAs shown in the map do not include all the BAP habitat in the region, nor do they include all the areas where BAP habitat could exist. In particular, more work is needed to develop approaches in urban and in marine environments.

The Biodiversity Opportunity Areas Map is the property of the members of the South East England Biodiversity Forum. For more information please see [www.sebiodiversity.org.uk](http://www.sebiodiversity.org.uk)

**Priority Habitat Mapping data supplied by Buckinghamshire County Council, Natural Environment Team.**  
**Data is correct of April 2010.**

This map is reproduced from Ordnance Survey material with the permission of Ordnance Survey on behalf of the controller of Her Majesty's Stationary Office© Crown Copyright. Unauthorised reproduction infringes Crown Copyright and may lead to prosecution or civil proceedings.  
 © Copyright Buckinghamshire County Council Licence No. 100021529 2010



Wendover Woodlands BOA Statement December 2010