

## South Western Commons Biodiversity Opportunity Area Statement



<b>Area Coverage</b>	360 ha
<b>Number of Designated Sites</b>	Local wildlife sites 2 SSSI 3
<b>BAP Habitat</b>	Lowland Dry Acid Grassland 1 ha Lowland Mixed Deciduous Woodland 9 ha Lowland Beech & Yew Woodland 35.5 ha Lowland Meadow 2.5 ha

*An area with a diverse geology, topography and biodiversity. The higher ground, acid grassland and heaths of Lane End and the lower areas of chalk.*

*This BOA connects with Hambleton & Wormsley Valleys BOA*

**Joint Character Area** Chilterns

**Landscape Types** Wooded agricultural land

**Geology** Mudstone (including London Clay). Moorend Copse contains swallow holes where streams drop through the clay into the chalk beneath.

**Topography** The land generally drops away gently to the south. There are two adjacent valleys with much steeper sides – to the south east near Marlow and the Hambleton Valley to the west.

**Biodiversity**  
 Acid Grassland – There are 2 areas of lowland dry acid grassland at Moorend Common SSSI  
 Lowland Meadows – There is an area of lowland meadow at Frieth Meadows SSSI  
 Heathland – There are areas of heathland on Moorend Common SSSI  
 Woodland - including areas of Beech High Forest and Wet Woodland (wet woodland at Widdenton Park Wood SSSI).

**Access** Lane End Parish Council own Moor End Common. There are numerous footpaths across the area

### Archaeology

**Targets**  
 Lowland Dry Acid Grassland – Management, Restoration, Creation  
 Lowland Meadows - Management, Restoration, Creation  
 Lowland Heathland - Management, Restoration, Creation  
 Woodland - Management, Restoration  
 Hedgerows – Management, Restoration  
 Arable Field Margins – Management, Creation

Area of BAP habitat present in BOA (from BCC Integrated Habitat System Mapping 2010) and 2015 Habitat Targets for this BOA				
South Western Commons BOA	Lowland Meadows	Lowland Dry Acid Grassland	Lowland Beech & Yew Woodland	Lowland Mixed Deciduous Woodland
Area of Habitat in BOA (ha)	2.6	0.9	35.5	8.9
% of BOA Area	0.7	0.2	9.9	2.5
% of County Resource	0.7	2.6	3	0.6
2015 BAP Targets	Lowland Meadows	Lowland Dry Acid Grassland	Native Woodland	
Maintenance (ha)	2.6	0.9	44.4	
Achieving Condition (ha)	2.6	0.9	41.7	
Restoration (ha)	0.2	4.4	1.2	
Creation (ha)	0	0	4.4	

Info on resource for other BAP habitats

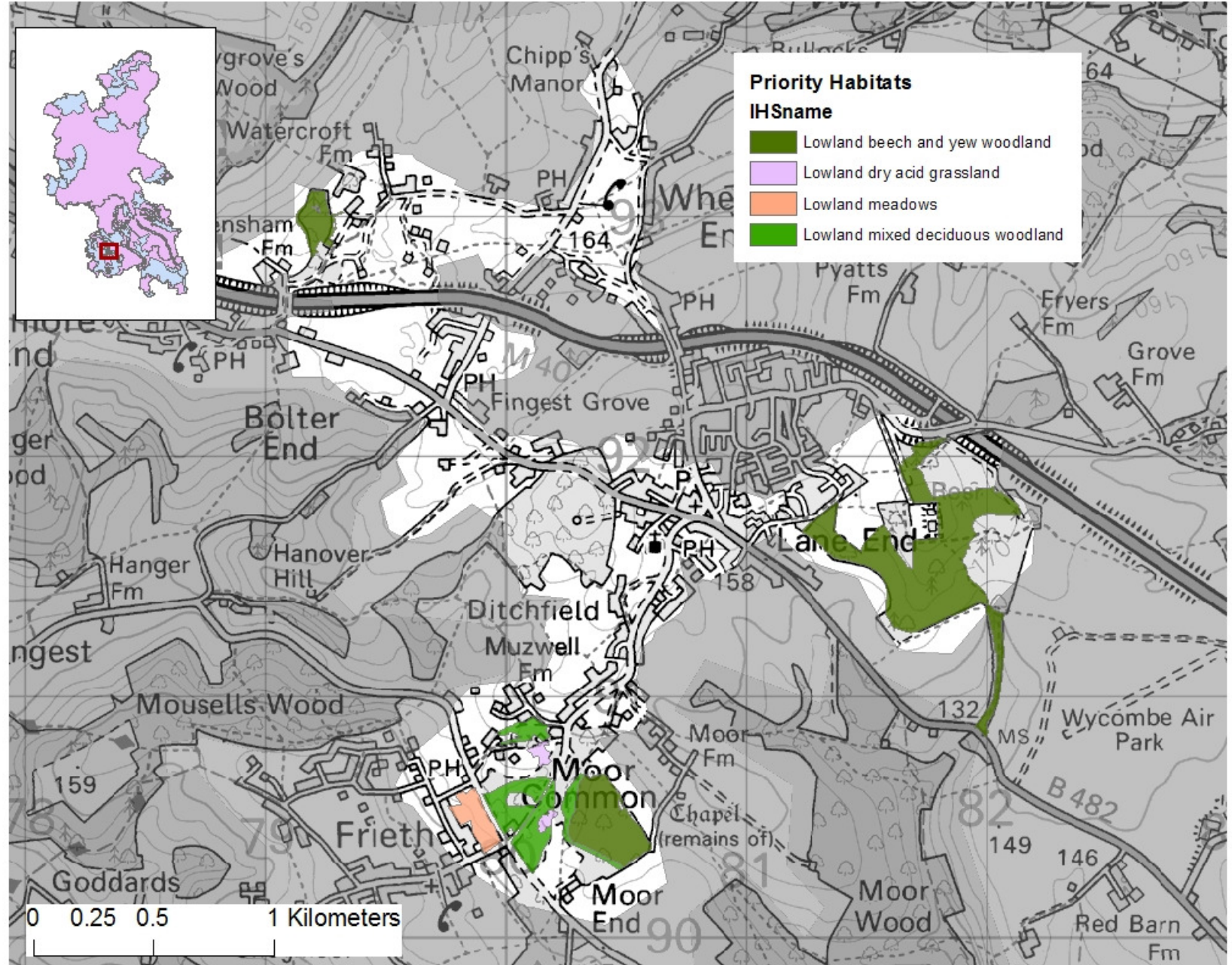
Arable Field Margins		Traditional Orchards		Ponds		Hedgerows	
Area of Arable (ha)	33	No of Orchards	0	No of BAP Priority Ponds	1	% of BOA with potential for hedgerows of high-med biodiversity value	25
% of BOA in arable	9	Area of Orchards (ha)	0	Creation Target	tbc	% of BOA with potential for hedgerows of med-low biodiversity value	35
Area of arable in ES (ELS / HLS)	4 (0)	<i>Data from PTES Traditional Orchards Aerial Photo Survey</i>				<i>Data from BCC Historic Landscape Assessment</i>	
% of arable in ES	12						

The Biodiversity Opportunity Areas (BOAs) map depicts the regional priority areas of opportunity for restoration and creation of Biodiversity Action Plan (BAP) habitats. This is a spatial representation of the BAP targets and the BOAs are areas of opportunity, not constraint. The BOAs shown in the map do not include all the BAP habitat in the region, nor do they include all the areas where BAP habitat could exist. In particular, more work is needed to develop approaches in urban and in marine environments.

The Biodiversity Opportunity Areas Map is the property of the members of the South East England Biodiversity Forum. For more information please see [www.sebiodiversity.org.uk](http://www.sebiodiversity.org.uk)

**Priority Habitat Mapping data supplied by Buckinghamshire County Council, Natural Environment Team.**  
**Data is correct of April 2010.**

This map is reproduced from Ordnance Survey material with the permission of Ordnance Survey on behalf of the controller of Her Majesty's Stationary Office© Crown Copyright. Unauthorised reproduction infringes Crown Copyright and may lead to prosecution or civil proceedings.  
 © Copyright Buckinghamshire County Council Licence No. 100021529 2010



South Western Commons BOA Statement December 2010