

Ashridge & Ivinghoe Beacon Biodiversity Opportunity Area Statement



Area Coverage	2130 ha
Number of Designated Sites	Local wildlife sites 3 SSSI 5
BAP Habitat	Lowland Calcareous Grassland 105 ha Lowland Beech and Yew Woodland 19.5 ha Reedbed 0.5ha Lowland Fen 0.2 ha

This area includes the Chiltern Escarpment around Ivinghoe Beacon, Pitstone Hill and the Ashridge Estate and the summit of the Escarpment at Ashridge. It also includes sites on the lower ground around Pitstone.

Joint Character Area	Chilterns
Landscape Types	The escarpment and lower slopes are agricultural unwooded, while the plateau is agricultural wooded
Geology	Chalk. The plateau is overlain with clay with flints.
Topography	The escarpment is very steeply sloping land.
Biodiversity	<p>Calcareous Grassland – There is calcareous grassland on Ivinghoe Hills and Pitstone Hill SSSIs and in Pitstone Quarry One LWS</p> <p>Woodlands – Part of Ashridge is designated in the Chilterns Beech Woodlands SAC and in Ashridge Commons & Woods SSSI. It contains Beech and Yew Woodland, Mixed Deciduous Woodland and mature pollards.</p> <p>Eutrophic Standing Water – College Lake is a flooded gravel pit</p> <p>Fen – There is a small fen in Pitstone Fen LWS</p> <p>Arable Field Margins – Areas of College Lake LWS are used to grow rare arable weeds</p> <p>Hedgerows – There are some areas of pre-18th century enclosure which may contain species rich hedgerows.</p>
Access	The Ashridge Estate, Pitstone Hill and Ivinghoe Beacon are National Trust. College Lake is managed by BBOWT.
Archaeology	Beacon Hill at Ivinghoe is a SAM
Targets	<p>Lowland Calcareous Grassland – Management, Restoration, Creation</p> <p>Woodland - Management, Restoration</p> <p>Arable Field Margins – Management, Creation</p> <p>Wood Pasture & Parkland - Restoration</p>

Eutrophic Standing Water – Management

Lowland Fen – Management

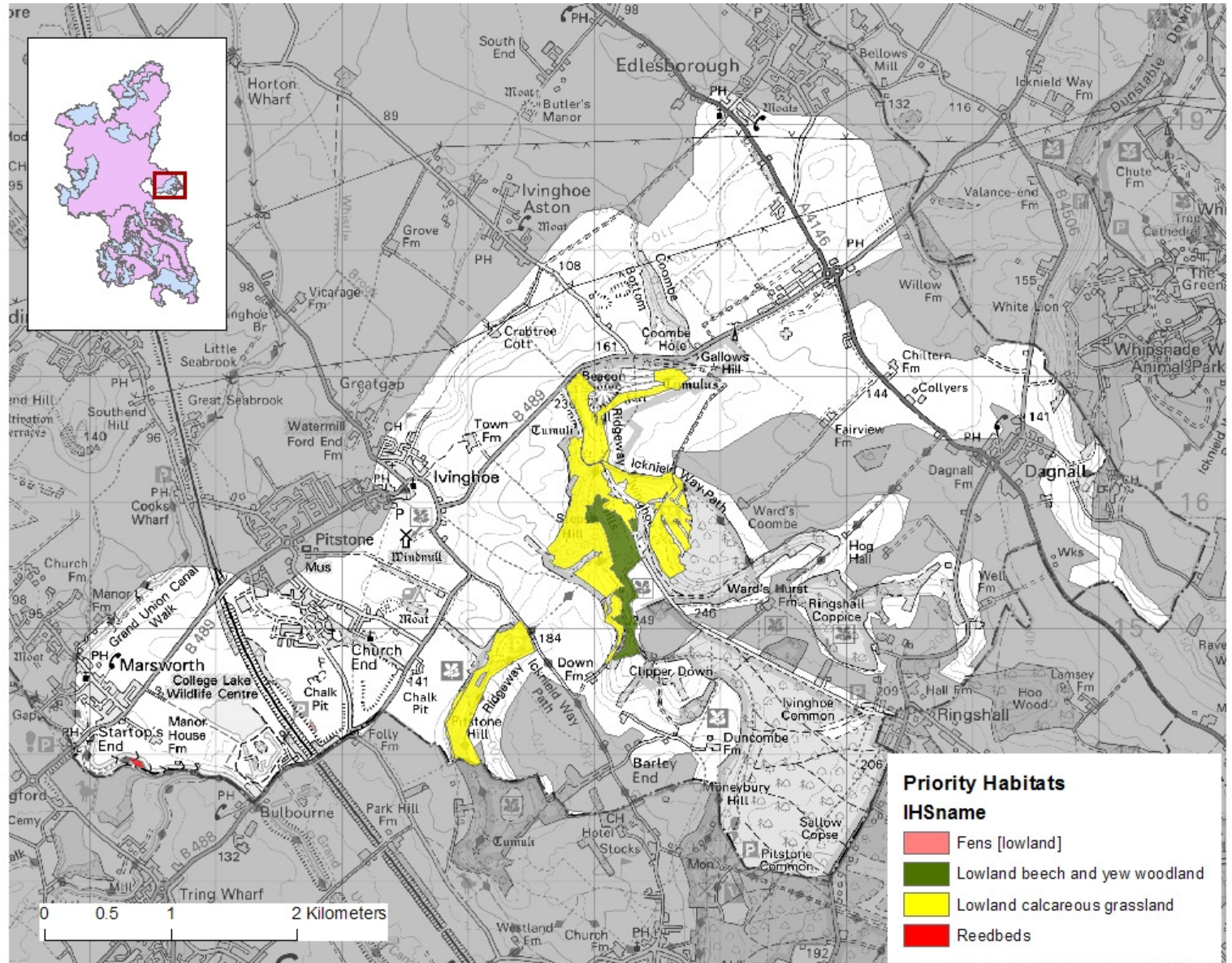
Reedbed - Management

Hedgerows - Management, Restoration, Creation

Area of BAP habitat present in BOA (from BCC Integrated Habitat System Mapping 2010) and 2015 Habitat Targets for this BOA				
Ashridge and Ivinghoe Beacon BOA	Lowland Calcareous Grassland	Lowland Fen	Reedbed	Lowland Beech & Yew Woodland
Area of Habitat in BOA (ha)	104.8	0.2	0.5	19.5
% of BOA Area	4.9	0.01	0.02	0.9
% of County Resource	30.4	0.3	2	1.6
2015 BAP Targets	Lowland Calcareous Grassland	Lowland Fen	Reedbed	Native Woodland
Maintenance (ha)	104.8	0.2	0.5	19.5
Achieving Condition (ha)	104.8	0.2	0.5	19.5
Restoration (ha)	59	0	N/A	38.7
Creation (ha)	59.5	N/A	0	0

Info on resource for other BAP habitats

Arable Field Margins		Traditional Orchards		Hedgerows	
Area of Arable (ha)	819	No of Orchards	3	% of BOA with potential for hedgerows of high-med biodiversity value	9
% of BOA in arable	38	Area of Orchards (ha)	1.5	% of BOA with potential for hedgerows of med-low biodiversity value	54
Area of arable in ES (of HLS)	543 (317)	<i>Data from PTES Traditional Orchards Aerial Photo Survey</i>		<i>Data from BCC Historic Landscape Assessment</i>	
% of arable in ES	66				



ERROR: stackunderflow
OFFENDING COMMAND: ~

STACK: