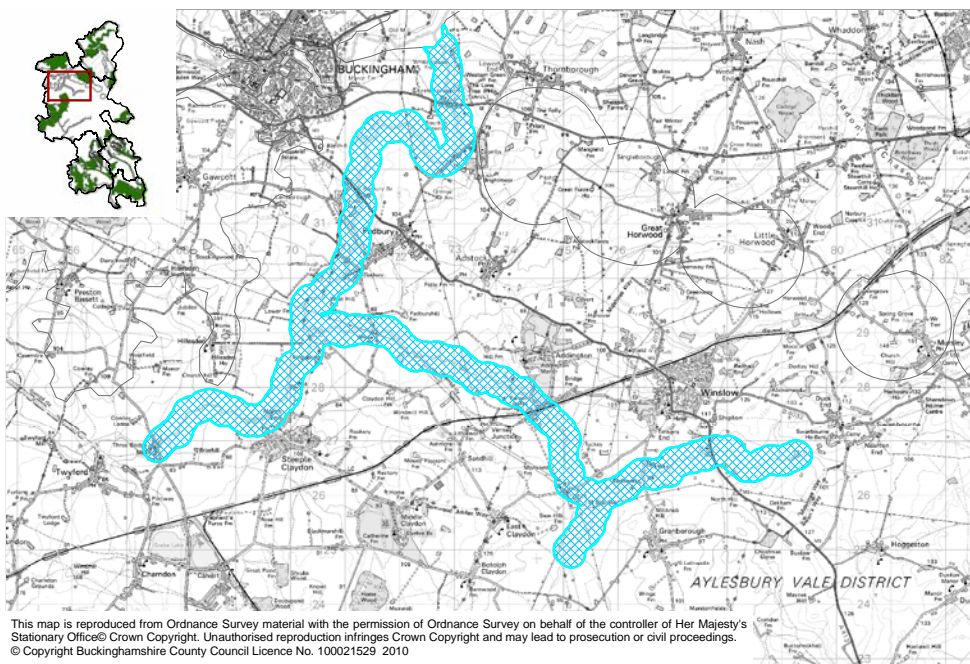


Claydon and Padbury Streams Local Biodiversity Opportunity Area Statement



Area Coverage	1347 ha
Number of Designated Sites	Local wildlife sites 1

*2 streams flowing into the River Great Ouse and flowing through low lying agricultural land
They connect the Ouse Valley and Whaddon Chase BOAs.*

Joint Character Area Bedfordshire & Cambridgeshire Claylands and Upper Thames Clay Vales

Landscape Types Unwooded agricultural

Geology Mostly mudstone. Limestone near Buckingham. All overlain by alluvial and river terrace deposits

Topography A wide shallowly sloping valley

Biodiversity Lowland Meadows
Ponds
Hedgerows - all of these habitats are located in Coombes Meadow complex
Rivers / Streams – The 2 streams offer a valuable route for dispersal of species.

Access

Archaeology There is ridge and furrow scattered throughout the area. There are 3 SAMs – Thornborough Bridge, Roman Barrows at Thornborough Bridge

and Norbury Hillfort

Targets

Lowland Meadows – Management, Restoration, Creation

Ponds - Management. Restoration, Creation

Hedgerows - Management. Restoration, Creation

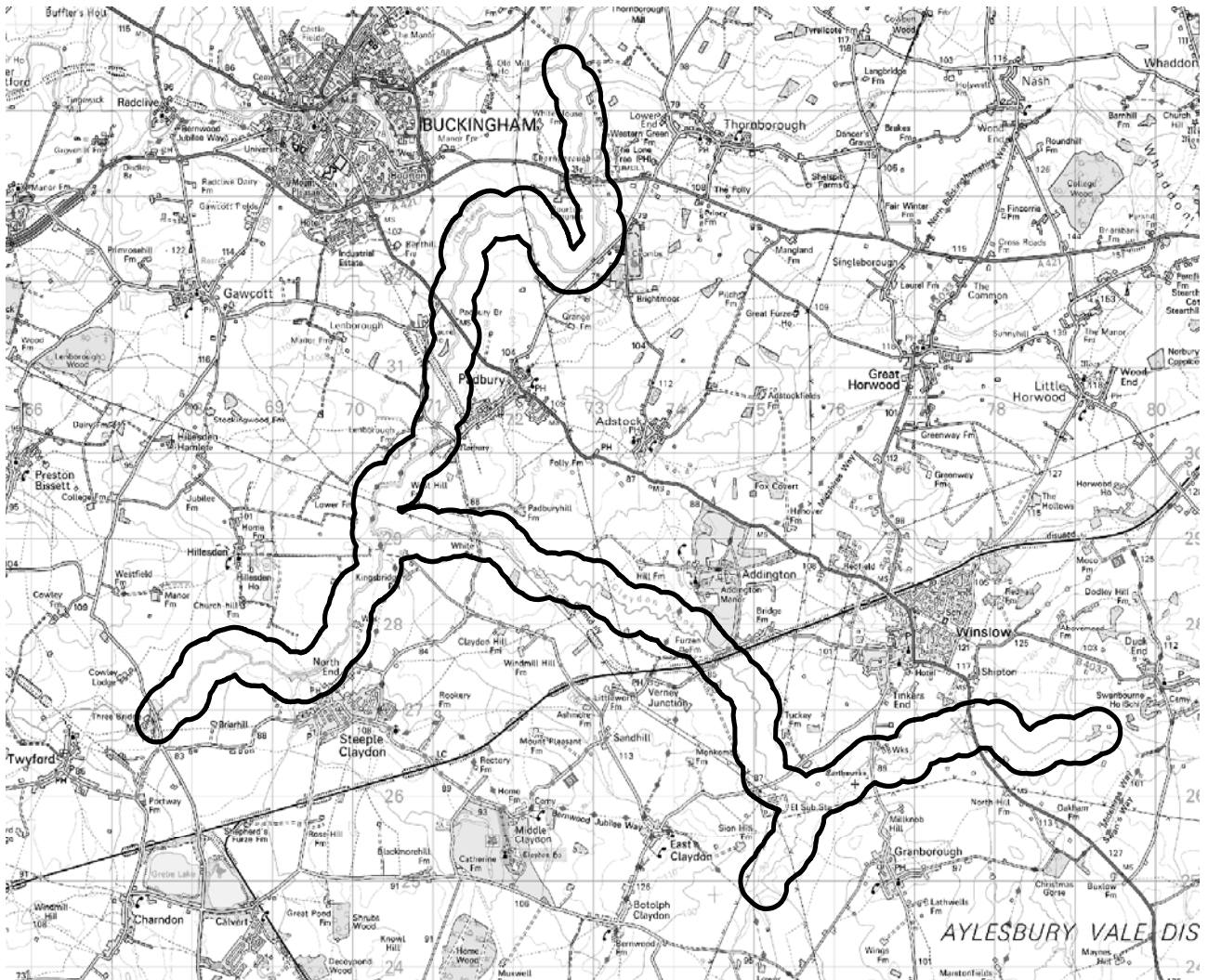
Rivers / Streams - Management. Restoration

Arable Field Margins – Management, Creation



The Biodiversity Opportunity Areas (BOAs) map depicts the regional priority areas of opportunity for restoration and creation of Biodiversity Action Plan (BAP) habitats. This is a spatial representation of the BAP targets and the BOAs are areas of opportunity, not constraint. The BOAs shown in the map do not include all the BAP habitat in the region, nor do they include all the areas where BAP habitat could exist. In particular, more work is needed to develop approaches in urban and in marine environments.

The Biodiversity Opportunity Areas Map is the property of the members of the South East England Biodiversity Forum. For more information please see www.sebiodiversity.org.uk



This map is reproduced from Ordnance Survey material with the permission of Ordnance Survey on behalf of the Controller of Her Majesty's Stationery Office © Crown copyright.

Unauthorised reproduction infringes Crown copyright and may lead to prosecution or civil proceedings. Buckinghamshire County Council 100021529 2008